

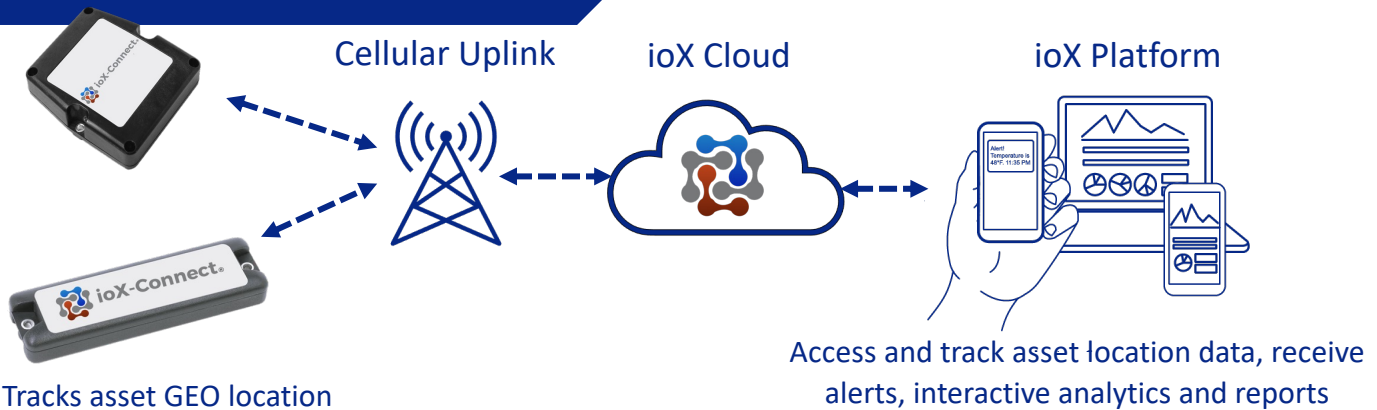


The Ultimate Low-Cost, Energy-Efficient Tracking Solution

Discover unparalleled situational awareness with ioX-Connect's asset trackers. Cutting-edge asset tracking devices designed for the modern enterprise. These robust, scalable solutions bridges the gap between edge computing and enterprise-level demands, offering a comprehensive platform to track, safeguard, and optimize your asset inventory across diverse environments.

Encased in a fully enclosed IP-66 rated shell, these devices boasts exceptional durability and a long battery life.

How it Works? – Base Network



Why use ioX-Connect Asset Tracking?

- ✓ Easy to use and install (No Wires)
- ✓ Low cost of ownership
- ✓ Globally capable - multi-band support
- ✓ Small footprint – lightweight
- ✓ Long battery life

How to get started?

1. Chose a Device

IOX-AX5

IOX-AX6

Most Popular

IOX-AX2

IOX-AX4



- Replaceable AA Batteries
- Cellular (LTE) or Wi-Fi Connectivity
- Rugged IP66 Rated
- Tamper Detection
- Track Motion, Movement, Position or Tilt

2. Chose your Subscription

Contact our sales team to discuss subscription and data plans that fit your needs.

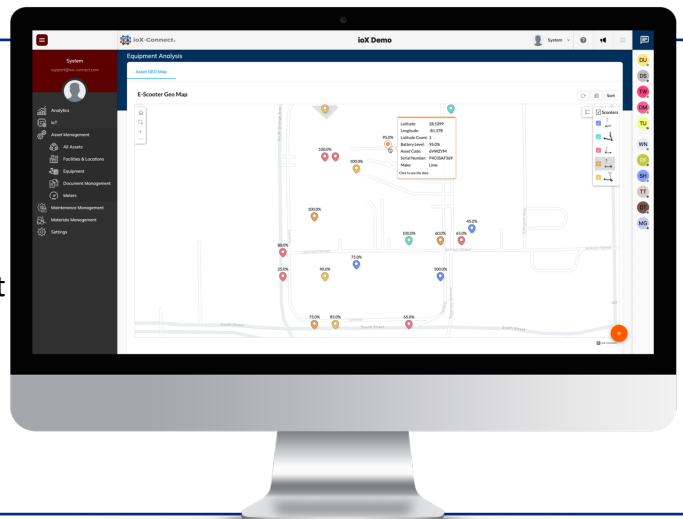
email: sales@iox-connect.com |
or call: +1 (321) 441-9641

- Hardware sold separately
- Discounts for annual subscriptions
- Flexible & custom plans
- Volume discounting







3. Monitoring Software

- **Multiple feature packs** to fit any budget (Including Custom Subscriptions)
- **Get Notifications** when assets go outside set areas or locations
- **Built-in CMMS** for automated maintenance event generation on Enterprise subscriptions
- **Advanced interactive analytics** for sensor data trend analysis and reporting
- **Integration capabilities** if you want to bring your own hardware



Hardware Technical Specifications

	IOX-AX2	IOX-AX4	IOX-AX5	IOX-AX6
Device				
Dimensions	4" x 4" x 1"	3.1" x 1.5" x 0.56"	3.85" x 3.4" x 1"	4.9" x 1.4" x 0.69"
Weight	8 oz.	1.5 oz.	8 oz.	2.5 oz.
Battery Type	AA Lithium, Replaceable	Lithium-ion, Rechargeable	AA Lithium, Replaceable	2 AA
Battery Life	Up to 14 Years	1.5 Years	Up to 14 Years	10+ years
Cellular Technology	LTE-M (CAT M1), NB-IoT, 2G Fallback	LTE-M (CAT M1), NB-IoT, 2G Fallback	LTE-M (CAT M1), NB-IoT, 2G Fallback	LTE-M (CAT M1), NB-IoT, 2G Fallback
Location Services	GPS, WiFi, Cellular	WiFi, Cellular	GPS, WiFi, Cellular	GPS, WiFi, Cellular
Sensors	Temperature, Humidity, 3 Axis Accelerometer	3 Axis Accelerometer	3 Axis Accelerometer, BLE, Laser Ranging Distance Sensor	3 Axis Accelerometer, Light, Temperature, BLE
Geography	International	International	International	International
Rugged	IP67	IP66	IP67	IP67
Operating Range	-30°C to +60°C / -22°F to 140°F	-20°C to +60°C / -4°F to 140°F	-30°C to +60°C / -22°F to 140°F	-40°C to +85°C / -40°F to 185°F

Expand beyond just asset tracking...

1. Chose a Gateway

Ethernet

MODBUS

Cellular
Most Popular



- Connect up to 100 Wireless loX Sensors per Gateway
- Monthly & Annual Data Plans available for all cellular gateways
- 24 Hour battery back-up
- Up to 2,000+ft non-line of sight range
- Over the air updates for no-touch maintenance

2. Chose your Sensors

Commercial
(Coin Cell)

Enterprise
(AA Battery)

Industrial
(3V Lithion)



- Over 80 different types to chose from
- Up to 7-years battery life*
- On-board memory

3. Monitoring Software

- **Multiple feature packs** to fit any budget (Including Custom Subscriptions)
- **Free basic sensor management** and notification portal with any hardware purchase
- **Built-in CMMS** for automated maintenance event generation
- **Advanced interactive analytics** for sensor data trend analysis and reporting
- **Integration capabilities** if you want to bring your own hardware

